

REEL TECH

Lighting-Lifts

2012/2013

MOVE IT
it's possible

Reel Tech Lighting-Lifts

REEL TECH develops lift systems

- For all types of luminaires, lighting systems, display banners and decorative displays
- For safe efficient maintenance, cleaning and relamping

Expensive maintenance and service costs of...

- Erecting scaffolding
- Operation down time
- Difficult access

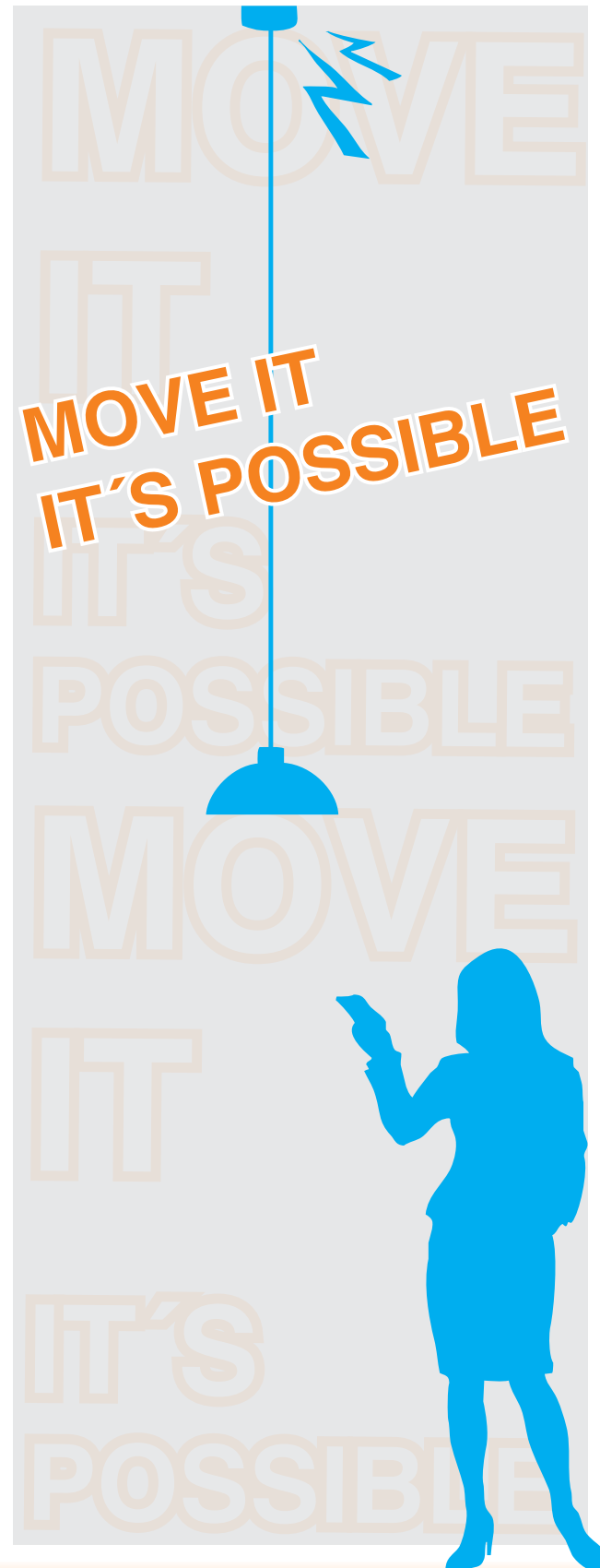
...are eliminated with REEL TECH Lighting-Lifts.

REEL TECH can help if ...

- Luminaires are too high or difficult to reach safely
- Disruption is to be avoided or kept to a minimum
- Maintenance is a risk or dangerous

REEL TECH reduces your current costs!

With solution-oriented products ...!



Content

Technical Information

The correct choice	page 4
For public safety	page 5
Standard lift	page 6
Multicontact lift	page 7

Reel Tech Lighting-Lifts

Compact Type Standard..... (to 15 kg)	page 8
Compact Type Multicontact..... (to 15 kg)	page 9
Hook Up Type Standard..... (to 25 kg)	page 10
Hook Up Type Multicontact..... (to 25 kg)	page 11
Heavy Duty Type Standard..... (to 50 kg)	page 12
Heavy Duty Type Multicontact..... (to 50 kg)	page 13
Super Heavy Duty Type..... (to 500 kg)	page 14

Reel Tech special products

Synchronous lifts	page 16
Power Zoom	page 17

Reel Tech accessories

Remote Control RCU.....	page 18
Twin-Set	page 18
Mounting brackets	page 19
Tandem connecting plate	page 19
Mounting bracket.....	page 20
Surface mounting cover.....	page 20
Recessed mounting plate	page 21
Downlight	page 21

Reference

Reference pictures	page 22
--------------------------	---------

Parts and features

Overview.....	page 23
---------------	---------

The correct choice

Reel Tech Lighting-Lifts are used to maintain or retrofit luminaires or banners in a safe, simple and economical manner. Luminaires can be repaired, relamped or cleaned at the push of a button.

Weight is the main criterion when selecting the appropriate lift. The weight of the luminaire plus the weight of any accessories must be taken into account. Never exceed the lifting capacity of the lift and always ensure at least 40% of the rated load is suspended from the lift to maintain tension on the suspension cables. See catalogue for guidance.

Lowering distance is the second most important criterion to consider. See page 5 for the lowering distance calculation.

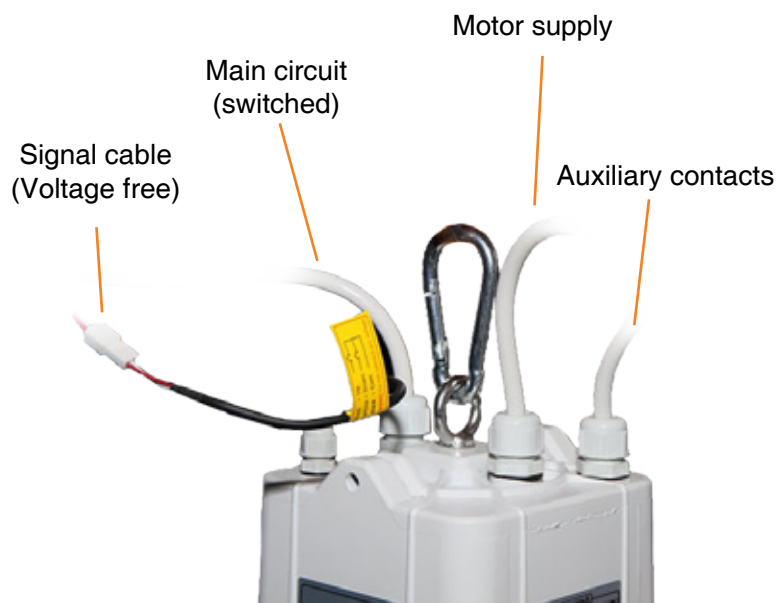
Shape and design of the luminaire determines if a single or dual suspension wire lift is required. See page 6.

Additional contacts for DALI, emergency packs or similar would require a multi contact lift. In addition to the main lighting circuit four additional auxiliary contacts are provided. See page 7.

Separate motor and lighting supply cables on some models allow dimming circuits, DALI or extra low voltage to be used independent of the motor supply.

Useful mounting accessories complete the range. Almost every application can be satisfied by a wide variety of fixing accessories. See page 19.

Wireless control and operation of the lift and lights can be carried out via the RCU (remote control handset) or manually via the volt free control cable. Each lift has its own integrated radio receiver with its unique address. The RCU can control up to 999 addresses and control each lift individually or in groups. The functions are up / down, stop, light on / off and to adjust the lowering distance.



For public protection once the lift begins to lower all electrical connections are isolated and power to the light is switched off. The light will switch on automatically when the lift is in its operating position, signalling that the safety jaws have engaged.



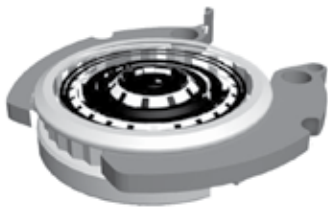
For public safety

Reel Tech Lighting-Lifts are maintenance free; there are no user serviceable parts. Product and quality is tested in accordance with TÜV-Austria and certificated by TÜV SÜD.

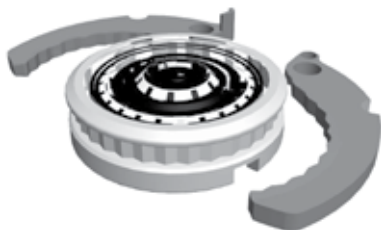


Reel Tech Lighting-Lifts comply with the relevant standards and building codes of practice which require two independent fixing points for suspended electrical equipment over 5kg mass in public buildings, stage and theatre.

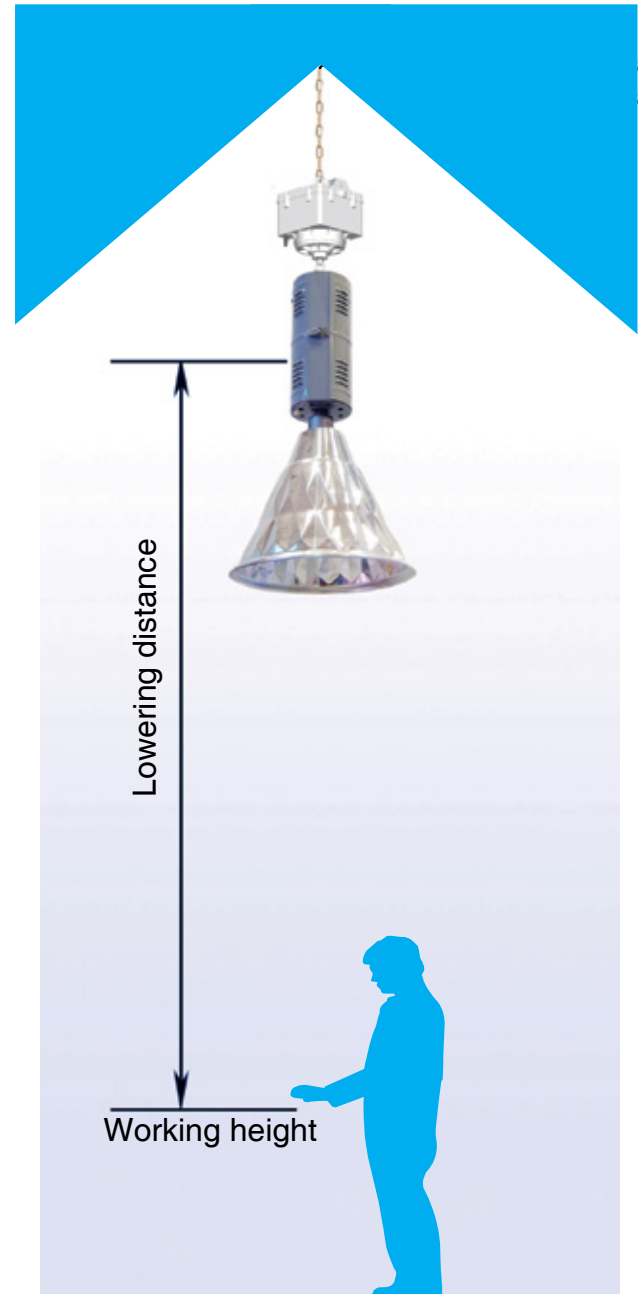
Safety locking devices provide additional security when the lift is at rest. Special safety locking jaws engage to take the load off the suspension cables. The jaws remain locked even in the event of power failure and only disengage when the lift is operated.



During operation the lowering ring first raises approximately 3mm allowing the safety jaws to disengage and the lift to lower. When raising the reverse is true, the lowering ring raises beyond 3mm, the safety jaws engage and the lift settles down to its rest position.



The lowering distance can be set and programmed to a safe and comfortable level via the RCU. The distance can be adjusted or changed at any time during the life of the lift.



DO NOT OPERATE THE LIFTS WITH PEOPLE STANDING OR PASSING BELOW. MAINTAIN A MINIMUM 6 METRE DIAMETER SAFETY ZONE AT ALL TIMES WHEN OPERATING A LIFT.

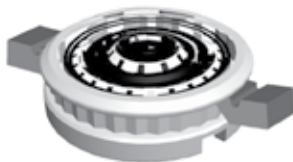
Standard lift

Signal control wires for switched operation
For lowering and raising only
Black to White = Lower
Black to Red = Raise

Supply voltage 230 V / 50 Hz,
for lift and light.

Robust IP54 aluminium housing

Safety catches carry the weight
of the load



Compact type locking system

The lowering distance is set by the RCU
at ground level

Suspension hook or
Mounting bracket (optional)

Integral receiver Wireless handset (RCU)
controls up to 999 lifts

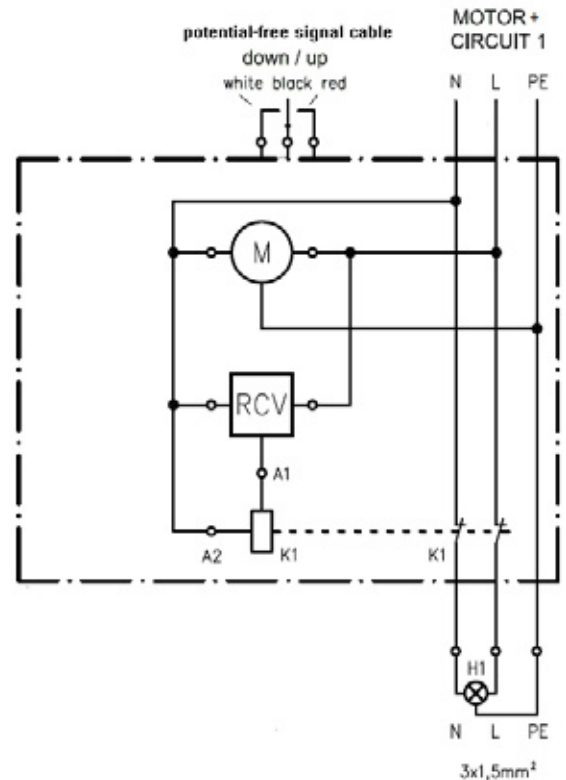
Patented 2 pole contacts are
safely isolated before lowering



Dual stainless steel cables eliminate
rotation, ideal for linear luminaires and
lowbays etc.



Single suspension wire lifts are
most suitable for highbay and
pendant style luminaires and
greater lowering distances are
possible.

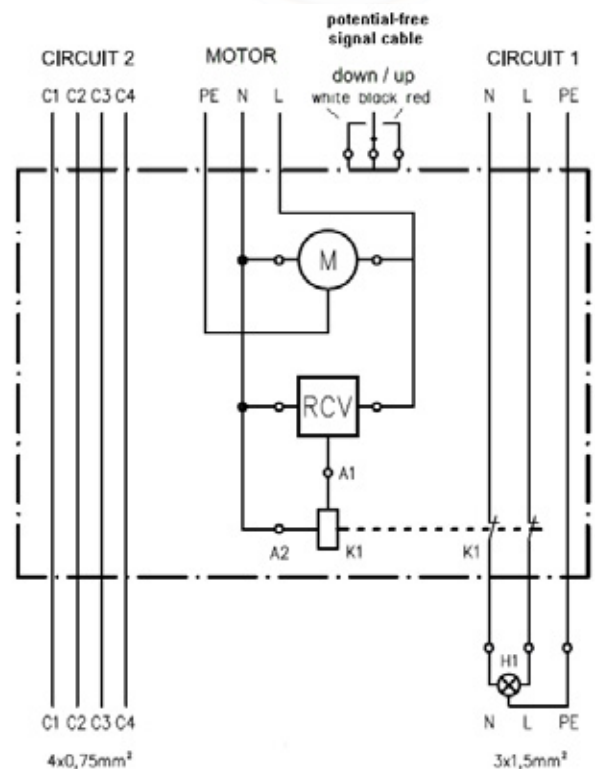


Multicontact lift

Multicontact models are used with DALI, emergency packs or when other additional circuits are required. In addition to the main circuit there are 4 additional auxiliary contacts for other circuits.

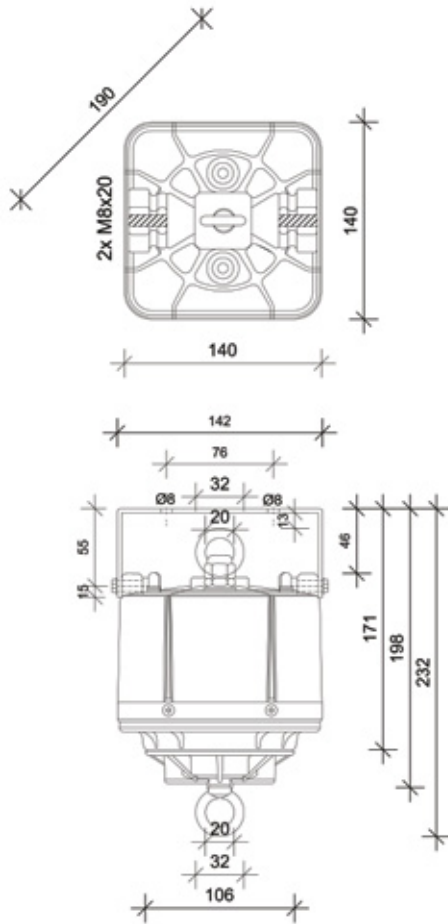
Intelligent design and a unique locking mechanism align the contacts after each lowering operation. Dual suspension cable lifts are recommended for use with linear luminaires or recessed applications. Multicontact models have a separate supply for the motor and lighting circuits.

Multicontact models make it possible to switch low voltage circuits, add a dimming circuit or an auxiliary lamp.



Compact Type Standard

Compact size and easy installation makes the Compact range the preferred solution for standard applications such as highbays, lowbays, downlights and fluorescents weighing 12kg to 15kg.



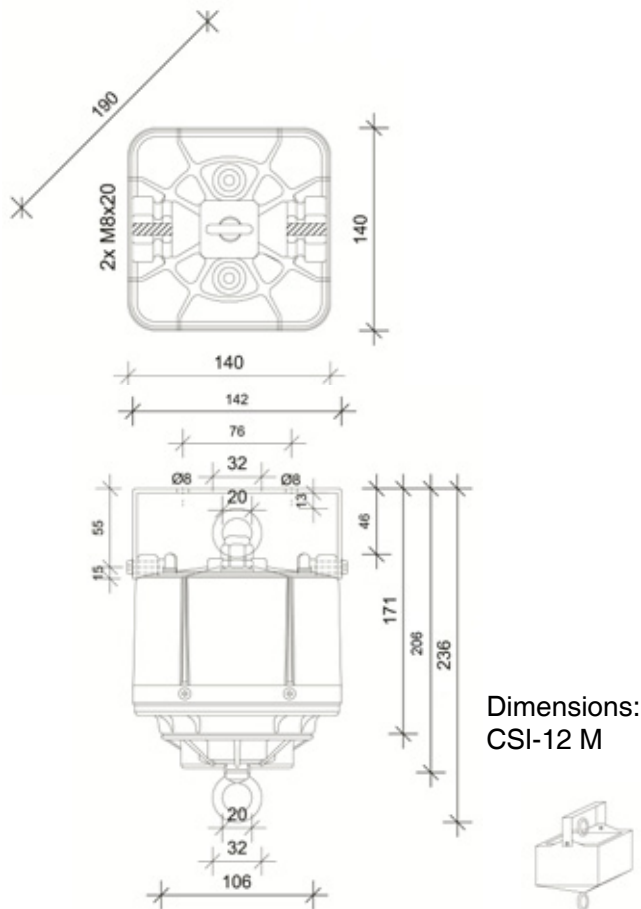
Dimensions:
CSI-12, CDI-15,
CDI-15 M



Compact Type	CSI-12	CDI-15
Lifting capacity	5-12 kg	7-15 kg
Lowering distance	15 m	10 m
Suspension cable	single	dual
Motor supply and lighting circuit	common	common
Power supply motor	230V/50Hz; 30W	230V/50Hz; 30W
Lighting circuit	16A, 230V AC	16A, 230V AC
Auxiliary contacts / capacity	-	-
Protection category / class	IP 54/I	IP 54/I
Temperature range	-15 °C to + 60 °C	-15 °C to + 60 °C
Net weight / with packaging	3,2/3,4 kg	3,3/3,5 kg

Compact Type Multicontact

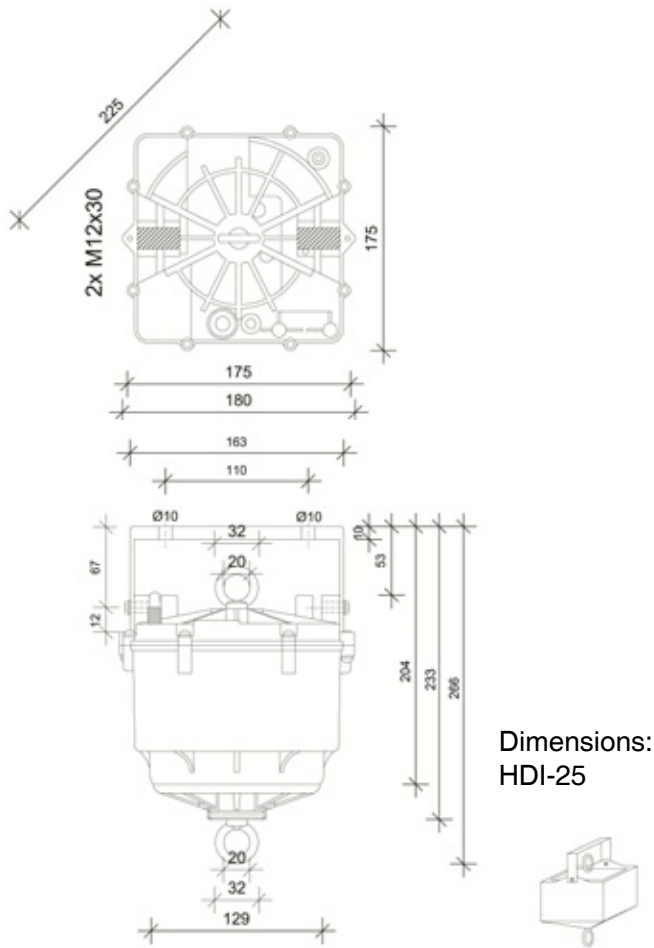
When additional auxiliary contacts are required or DALI, emergency packs or other circuits the Compact multi-contact version is ideal. Separate power supplies for the motor, main lamp and auxiliary contacts offer flexibility and dimming facility for loads up to 15kg.



Compact Type Multicontact	CSI-12 M	CDI-15 M
Lifting capacity	5-12 kg	7-15 kg
Lowering distance	15 m	10 m
Suspension cable	single	dual
Motor supply and lighting circuit	separate	separate
Power supply motor	230V/50Hz; 30W	230V/50Hz; 30W
Lighting circuit	16A, 230V AC	16A, 230V AC
Auxiliary contacts / capacity	4/6A, 230V AC	4/6A, 230V AC
Protection category / class	IP 54/I	IP 54/I
Temperature range	-15 °C to + 60 °C	-15 °C to + 60 °C
Net weight / with packaging	3,5/3,9 kg	3,5/3,9 kg

Hook Up Type Standard

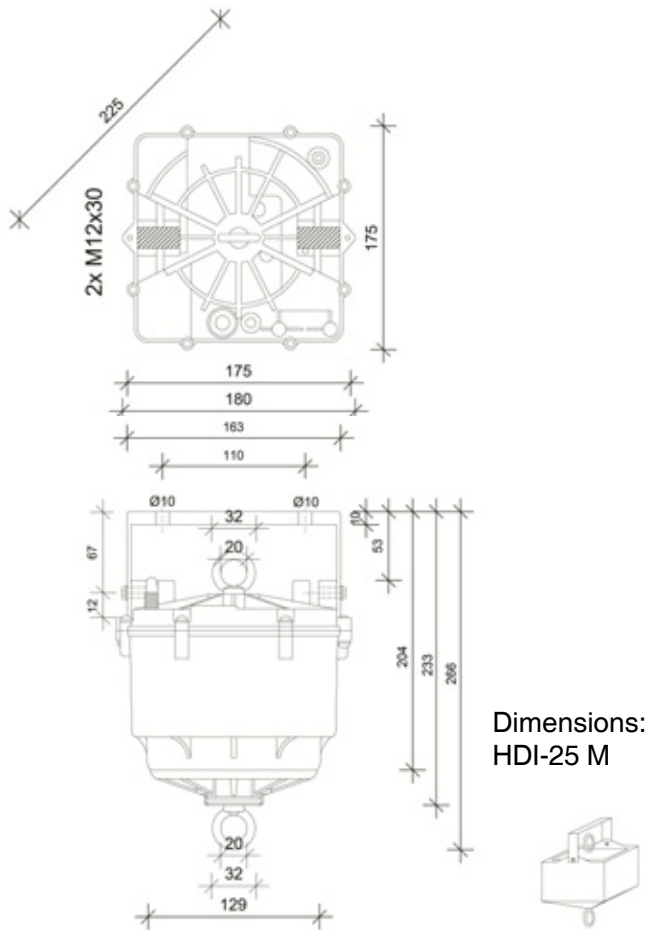
The Hook Up family is an economical solution for loads of up to 25kg, 10m in height. Dual suspension cables provide stability and avoid rotation of the luminaire where directional lighting is required.



Hook Up Type	HDI-25
Lifting capacity	10-25 kg
Lowering distance	10 m
Suspension cable	dual
Motor supply and lighting circuit	common
Power supply motor	230V/50Hz; 30W
Lighting circuit	16A, 230V AC
Auxiliary contacts / capacity	-
Protection category / class	IP 54/I
Temperature range	-15 °C to + 60 °C
Net weight / with packaging	6,8/7,4 kg

Hook Up Type Multicontact

When additional auxiliary contacts are required for DALI, emergency packs or other circuits the Hook Up multicontact version is ideal. Separate power supplies for the motor, main lamp and auxiliary contacts offer flexibility and dimming facility for loads up to 25kg.

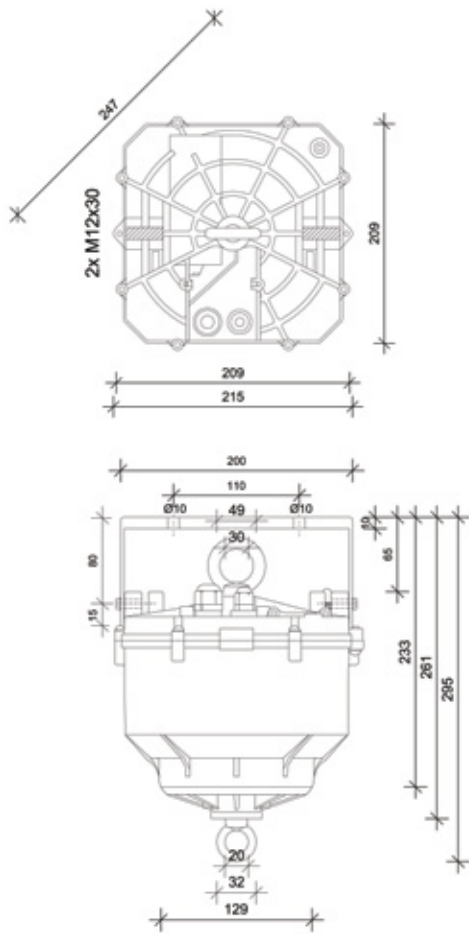


Hook Up Type Multicontact	HDI-25 M
Lifting capacity	10-25 kg
Lowering distance	10 m
Suspension cable	dual
Motor supply and lighting circuit	separate
Power supply motor	230V/50Hz; 40W
Lighting circuit	16A, 230V AC
Auxiliary contacts / capacity	4/6A, 230V AC
Protection category / class	IP 54/I
Temperature range	-15 °C to + 60 °C
Net weight / with packaging	7,0/7,6 kg

Reel Tech Lighting-Lifts

Heavy Duty Type Standard

Heavy duty lifts range from 20kg to 50kg with mounting heights ranging from 10m to 15m offering wider flexibility.



Dimensions:
PSI-20, PSI-30,
PDI-35, PDI-50,
PDI-35 M, PDI-50 M



Heavy Duty Type	PSI-20	PSI-30	PDI-35	PDI-50
Lifting capacity	7-20 kg	12-30 kg	15-35 kg	15-50 kg
Lowering distance	15 m		10 m	
Suspension cable	single		dual	
Motor supply and lighting circuit	common		common	
Power supply motor	230V/50Hz; 120W		230V/50Hz; 120W	
Lighting circuit	16A, 230V AC		16A, 230V AC	
Auxiliary contacts / capacity	-		-	
Protection category / class	IP 54/I		IP 54/I	
Temperature range	-15 °C to + 60 °C		-15 °C to + 60 °C	
Net weight / with packaging	8,7/9,9 kg		8,7/9,9 kg	9,5/10,7 kg

Heavy Duty Type Multicontact

The multi-contact version of the Heavy duty range offer the same flexibility as the standard version but are available up to 20m. Separate powersupplies for the motor, main lamp and auxiliary contacts offer flexibility and dimming facility for loads up to 50kg.



Heavy Duty Type Multicontact	PSI-20 M	PSI-30 M	PDI-35 M	PDI-50 M
Lifting capacity	7-20 kg	12-30 kg	15-35 kg	15-50 kg
Lowering distance	20 m	15 m	10 m	
Suspension cable	single		dual	
Motor supply and lighting circuit	separate		separate	
Power supply motor	230V/50Hz; 120W		230V/50Hz; 120W	
Lighting circuit	16A, 230V AC		16A, 230V AC	
Auxiliary contacts / capacity	4/6A, 230V AC		4/6A, 230V AC	
Protection category / class	IP 54/I		IP 54/I	
Temperature range	-15 °C to + 60 °C		-15 °C to + 60 °C	
Net weight / with packaging	8,7/9,9 kg		8,7/9,9 kg	9,5/10,7 kg

Super Heavy Duty Type

For loads over 50kg and up to 30m high the Super Heavy Duty series are used. This range is characterized by its quietness and a robust technology. Drive and control procedures are carried out in duplicate using two motors. Dual cable guides result in an extremely precise and reliable rotating 4-fold suspension. The operating speed has been adjusted so that acceleration and applied forces during lifting and lowering are kept extremely low, making it ideal for sensitive loads like chandeliers.



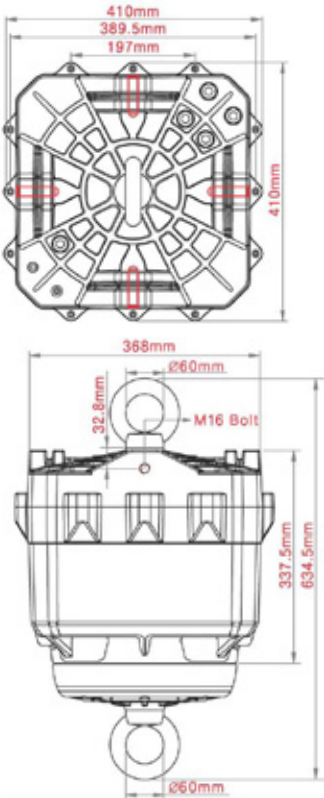
Should lowering distances of more than 30m be required it is possible to connect two lifts in tandem.

Super Heavy Duty Type	PFI-100	PFI-200	PFI-300	PFI-500
Lifting capacity	50-100 kg	80-200 kg	100-300 kg	200-500 kg
Lowering distance	20 m/30 m	20 m/30 m	20 m/30 m	15 m/20 m
Suspension cable	2x dual	2x dual	2x dual	2x dual
Motor supply and lighting circuit	separate	separate	separate	separate
Power supply motor	230V/50Hz; 200W	230V/50Hz; 300W	230V/50Hz; 400W	230V/50Hz; 600W
Lighting circuit	16A, 230V AC	16A, 230V AC	16A, 230V AC	16A, 230V AC
Circuit, 2-pole switched	4	4	4	4
Protection category / class	IP 54/I	IP 54/I	IP 54/I	IP 54/I
Temperature range	-15 °C to + 60 °C	-15 °C to + 60 °C	-15 °C to + 60 °C	-15 °C to + 60 °C
Net weight / with packaging	53/63 kg	53/63 kg	59/69 kg	62/72 kg

Technical Information

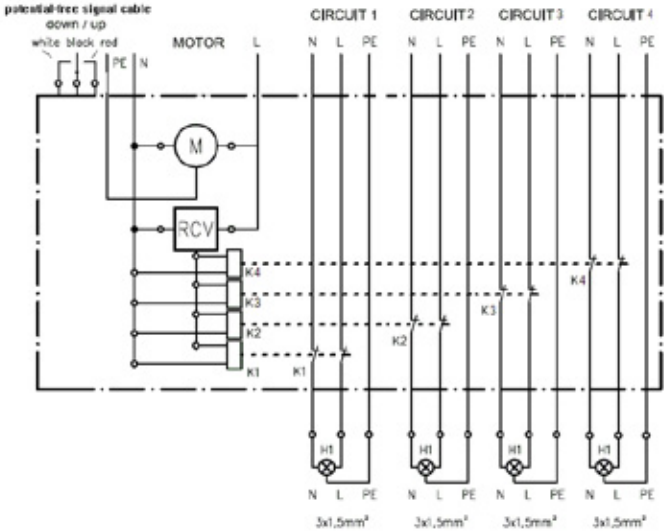
The Super Heavy Duty series has four separate two pole lighting circuits. Each of which can be used for a power supply for lighting circuits or for auxiliary control or signal.

The motor and lighting circuits have their own supply cables to allow individual circuit protection.



Mounting kit MB-D

For Super Heavy Duty type, consists of 4 x 150 x 150 x 110 mm angle brackets, 4 M16 x 30mm bolts.



WR PFI dummy weight holder

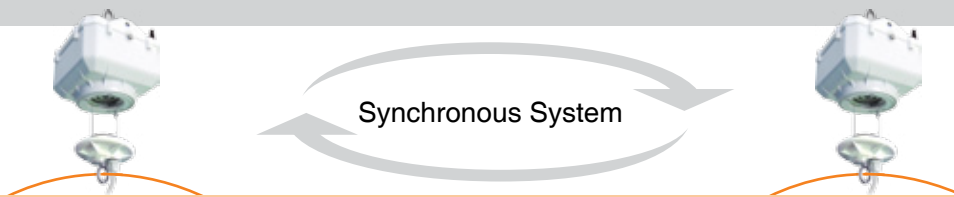
WR PFI holds 4 x 20 kg dumbbell weights. 170mm ø x 340mm height. White, RAL 9010. Weights not supplied.



Synchronous lifts

Reel Tech synchronous lifts are used with lighting rigs, lighting tracks, displays and banners. A wireless remote control system controls two lifts, the master and slave. Both are controlled in parallel via the built-in wireless receiver and RCU.

If one lift is out of synch with the other automatic level adjustment can be performed by pressing the stop button, the lifts will stop, self-level then continue to descend.



The combined maximum load must not exceed the lifting capacity of one lift.



Synchronous lift	HDI-25B M	PDI-35B M	PDI-50B M
Technical data page	11	13	13
Synchronous lift	PFI-100B/20m	PFI-200B/20m	PFI-300B/20m
Technical data page	14/15	14/15	14/15

Power Zoom - LSI-10C / LSI-10L

Power Zoom lowers sockets or lights from above! This is particularly useful for lowering a power supply to a low level in supermarkets, offices, laboratories, schools or seminar rooms etc. Lights up to 10kg can be lowered to 3m and still function when switched on.



LSI-10C



LSI-10L

Power Zoom	LSI-10C	LSI-10L
Lifting capacity	-	5-10 kg
Lowering distance	3 m	3 m
Suspension cable	single	single
Motor supply and lighting circuit	common	common
Power supply motor	230 V AC, 50 Hz/ 40 W	230 V AC, 50 Hz / 40 W
Lighting circuit	16 A	16 A
Protection category / class	IP 20/I	IP 20/I
Temperature range	-15 °C to + 60 °C	-15 °C to + 60 °C
Net weight / with packaging	9,0/11 kg	7,8/9,3 kg
Space required	ca. 60 cm	ca. 55 cm

Remote Control RCU and Twin-Set

Remote Control RCU

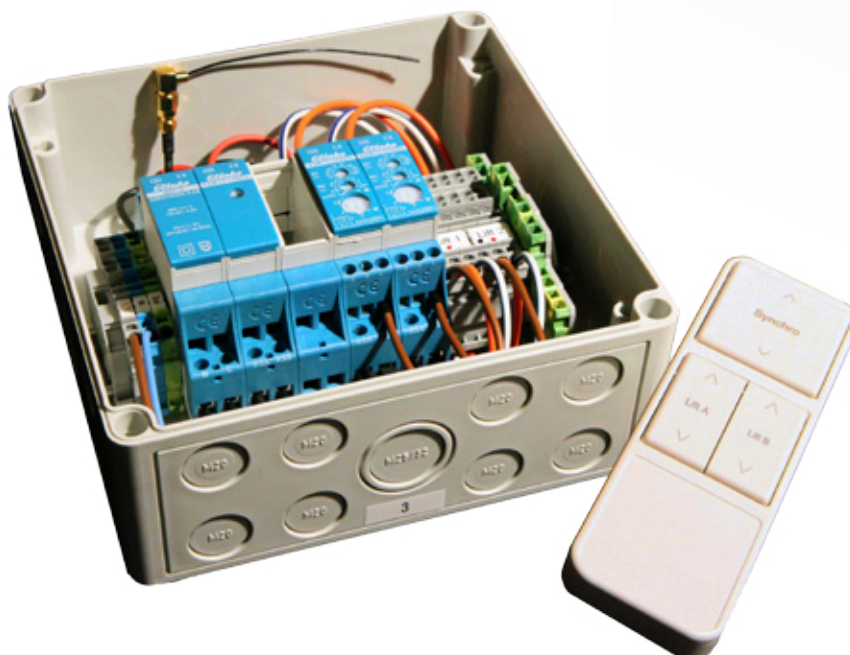
The RCU/remote control handset enables convenient control of up to 999 lifts per group. Lift functions are up/down, stop, light on/off, single and group control. Lowering distance can also be set using the RCU.

Individual lifts, groups of lifts or lights can be controlled by one RCU. Lifts can be assigned to 1 of 4 group functions.

The RCU operates in the license-free ISM band of 433.92 MHz. The range is circa 100 meters.

Twin-Set - Three button solution!

The TWIN-set remote control consists of a transmitter and external radio receiver. Two standard or multi-contact lifts connected together can be lowered or raised together or individually by using the transmitter.

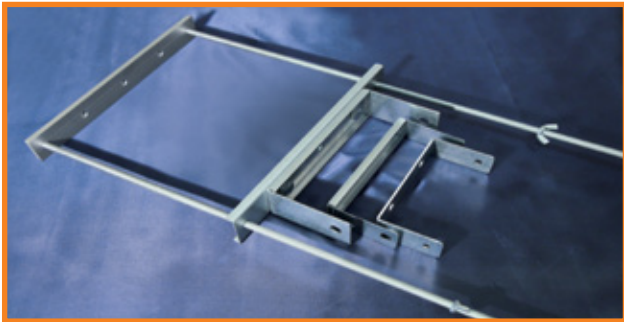


Mounting brackets and tandem connecting plate

Mounting brackets MB

Mounting brackets are used to secure the lift by two fixing points in line with building regulations. They reduce vibration and ensure that the lift remains stable.

Variable mounting brackets (MB-V) allow for quick and easy height adjustment of the lift if installed behind a false ceiling.



Tandem connecting plate TCP-CS

The tandem connecting plate enables two lifts to be joined together in tandem if greater lowering distances are required.



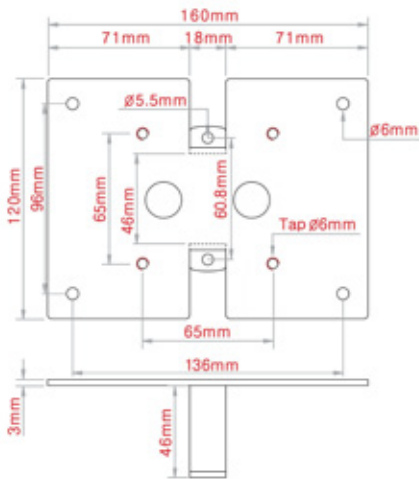
Part number	Bolts	Suitable for Lift Type	Page	Dimensions
MB-A	2 x M8 x 18	Compact	8 and 9	142 x 70 x 35 mm
MB-B	2 x M12 x 30	Hook Up	10 and 11	163 x 79 x 39 mm
MB-C	2 x M12 x 30	Heavy Duty	12 and 13	200 x 95 x 50 mm
MB-V	2 x M10 x 600	to 50 kg	8 to 13	300(400)x600x53 mm

Mounting bracket and surface mounting cover

Mounting bracket RCMP- M

The rectangular mounting plate (RCMP- M) is used to fit rectangular or linear luminaires weighing up to 50kg. White, RAL 9010.

A mounting plate (RCMP-CS) to the customers own specification can be provided if required.



Mounting plate with threaded coupler

For fixing to conduit or direct to a luminaire.

Thread sizes:

1/2" for Compact Type

3/4" for Hook-Up and Heavy Duty Type

Surface mounting cover for Compact lifts – AH-A

The surface cover conceals the lift, mounting bracket and wiring from view.

A gap of 2cm is maintained between the top of the cover and the ceiling to dissipate any heat generated. The cover lowers to the ground when the lift is operated.

AH-A for Compact types, 210mm ø x 200mm, white, RAL 9010.

AH-CS to customers specification.



Recessed mounting plate and Downlights

Recessed mounting plate RA

If a lift is installed behind a suspended the recessed ceiling cover can be used to conceal the hole cut-out, lift and wiring.

It is fitted with four springs which can be adjusted to ensure that the plate fits snug to the ceiling while allowing the lifts locking mechanism to function correctly.

A distance of 50 to 60mm between the underside of the ceiling and the lift lowering ring must be set. For precise adjustment the variable mounting bracket MB-V is recommended.

Recessed mounting plate RA-M up to 50kg,
400mm Ø x 51mm, White, RAL 9010.

Recessed mounting plate RA-CS to customer.



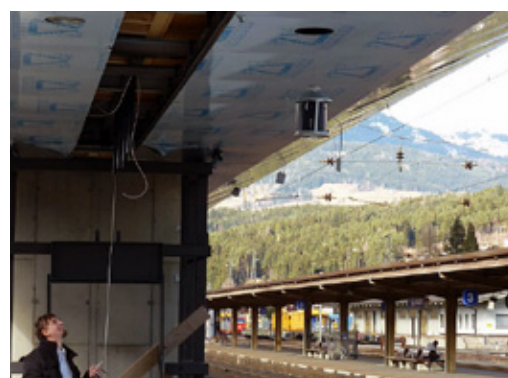
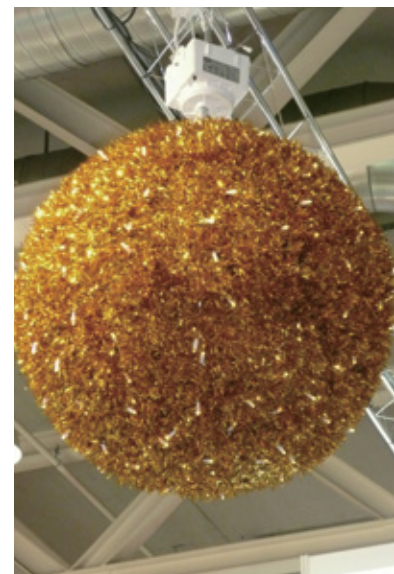
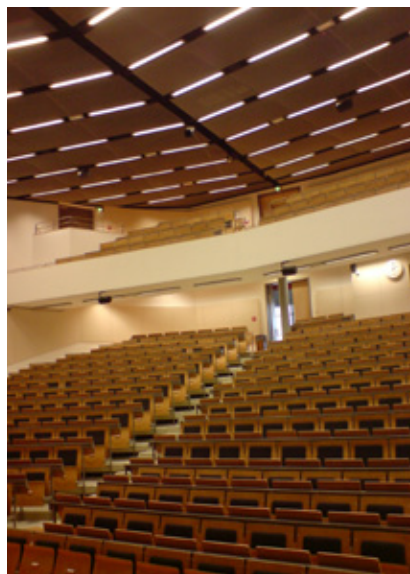
Downlight mounting frame - Customized

Reel Tech Lighting-Lifts are used for a wide variety of luminaires. The scope of applications is virtually unlimited.

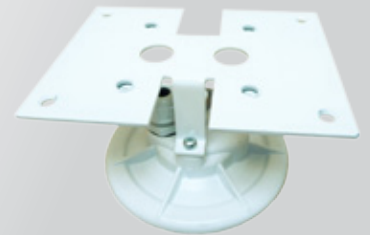
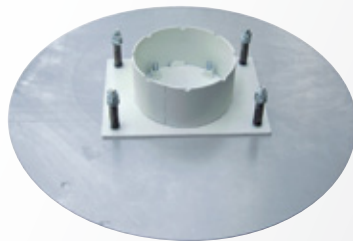
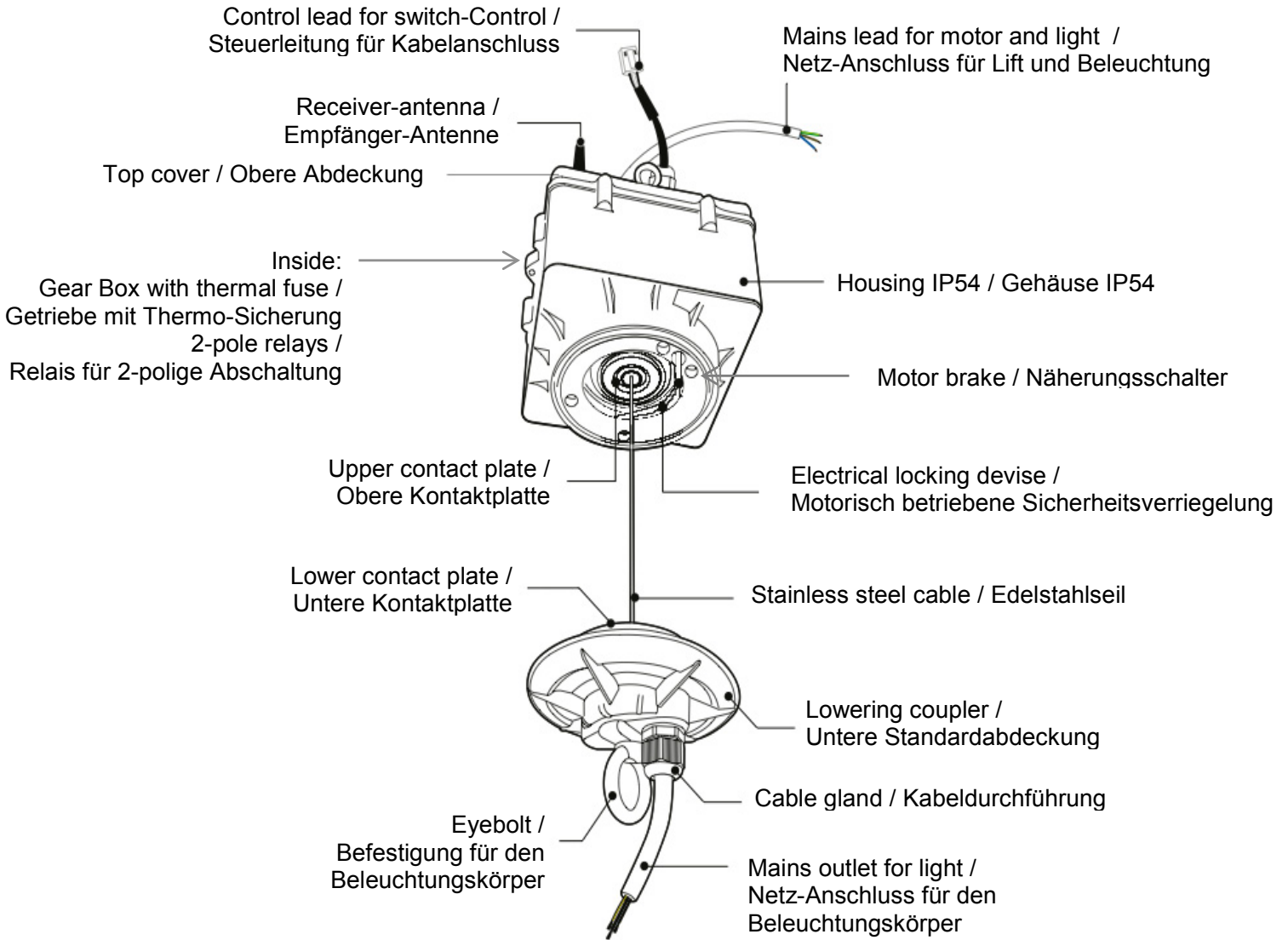
Constantly creating new components and solutions like the recessed downlight frame Reel Tech can help find the solution.

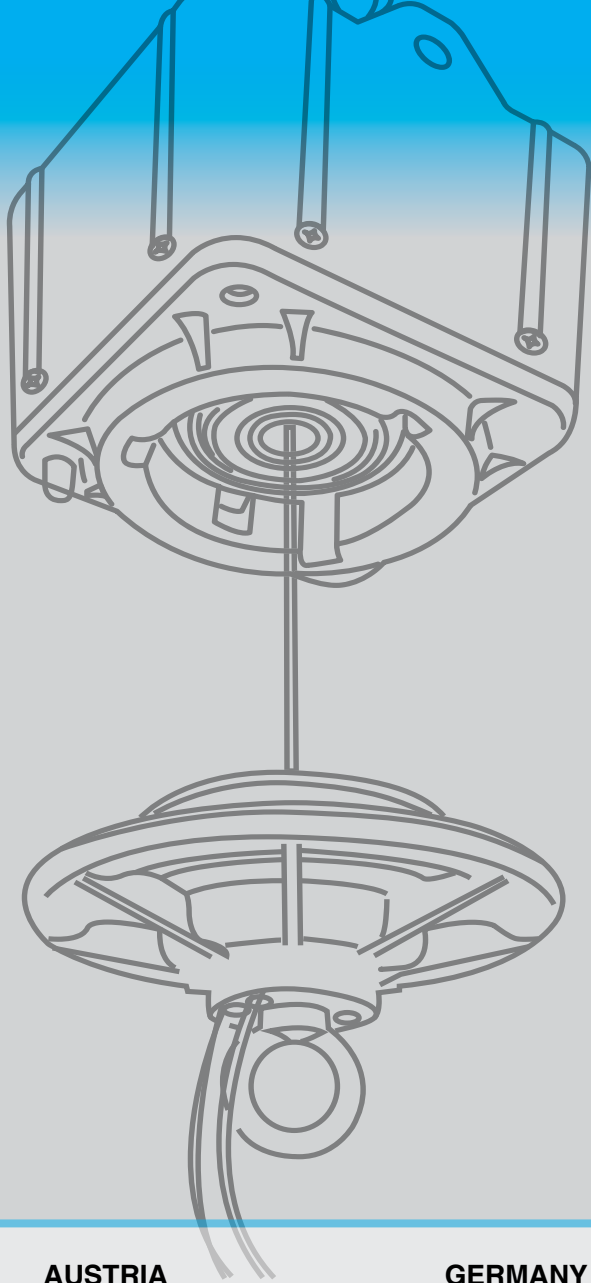


References



Overview





AUSTRIA

Reel Tech HandelsgesmbH

Trillergasse 4, Top E/21B
A-1210 Wien
Phone +43 (0) 1 960 80 88
Fax +43 (0) 1 960 80 88-80
Email office@reeltech.eu

GERMANY

ReelTech Vertriebs GmbH

Rangenbergstr. 33
60388 Frankfurt / Main
Phone +49 (0) 6109 / 5016151
Fax +49 (0) 6109 / 5016150
Email office@reeltech.de

UNITED KINGDOM

REEL TECH UK Ltd

22 Ibstock Close, Billing Lane
Northampton, NN3 5DL
Phone +44 (0) 1604 643522
Fax +44 (0) 1604 697028
Email enquiries@reeltechuk.com

SWITZERLAND

Demelectric AG

Phone +41 (0) 43 455 44
Email info@demelectric.ch

NETHERLANDS

Industrielight B.V.

Phone +31 (0) 78 692 0902
Email info@industrielight.nl

NORWAY

Noack AS

Phone +47 (0) 69 70 03 26
Email post@noak.no

POLAND

MBB.s.c.

Phone +48 (0) 22 331 75 70
Email mbb@mbb.pl

SWEDEN

Tivalux AB

Phone +46 (0) 31 55 99 95
Email info@tivalux.se

© Copyright by Reel Tech HandelsgesmbH

Edition: April 2012 Technical changes reserved.